

A New Species of *Ptenus* Kirby from Arizona

(Hymenoptera: Argidae)¹

HAROLD N. GREENBAUM²

Department of Entomology and Nematology, University of Florida
Gainesville, Florida 32611

Among specimens at the Florida State Collection of Arthropods (Gainesville) is a female individual of an undescribed species of the genus *Ptenus* Kirby (Hymenoptera: Argidae: Sterictiphorinae) from Arizona. A second female was found in the personal collection of C. W. O'Brien. Smith (1970) revised this genus and recognized 2 valid species previously named and described 10 additional new species. The specimens at hand are similar to the female of *P. patulus* Smith to which they run in Smith's key to species, placing them in his species-group 3, which should be characterized as follows:

Scopa of sheath short, thick or thin; in lateral view, broadly truncate at apex (Fig. 1-4). Lancet long, slender; annuli with hairs, not spines or teeth; 20 or more annuli (Fig. 5-6). Clypeus truncate. *P. patulus* Smith, *P. apulatus* Greenbaum new species.

KEY TO SEPARATE FEMALES OF *P. PATULUS* AND *P. APULATUS*

- Ventral angulation of saw sheath rounded (Fig. 1); lancet with 30 or more annuli and serrulae symmetrical, bearing 4-5 fine anterior and 5-6 fine posterior subbasal teeth (Fig. 5) *patulus* Smith.
Ventral angulation of saw sheath broadly, roundly emarginated, the corners sharp (Fig. 2); lancet with fewer than 30 annuli, usually about 20, and with serrulae asymmetrical, the posterior slope about 3 times longer than the anterior slope and bearing 3-5 coarse posterior subbasal teeth (Fig. 6) *apulatus* Greenbaum, new species.

Ptenus apulatus, new species

Female.—Length, 5.5 mm. Color black, with apices of femora, front and middle tibiae and tarsi, basal half of hind tibiae, and extreme base of wings including vein bases white; wings moderately infuscated, veins except basally and stigma dark brown. Clypeus truncate. Hind wing without anal cell. Saw sheath (Fig. 2,4) with scopae, in dorsal view short and much broader than long, the scopae thin, in lateral view extremely short and broad, truncate at apex, broadly roundly emarginated at ventral angulation, the corners sharp, rounded

¹ Florida Agricultural Experiment Station Journal Series No. 5392.

² Research Associate, Florida State Collection of Arthropods, Gainesville.

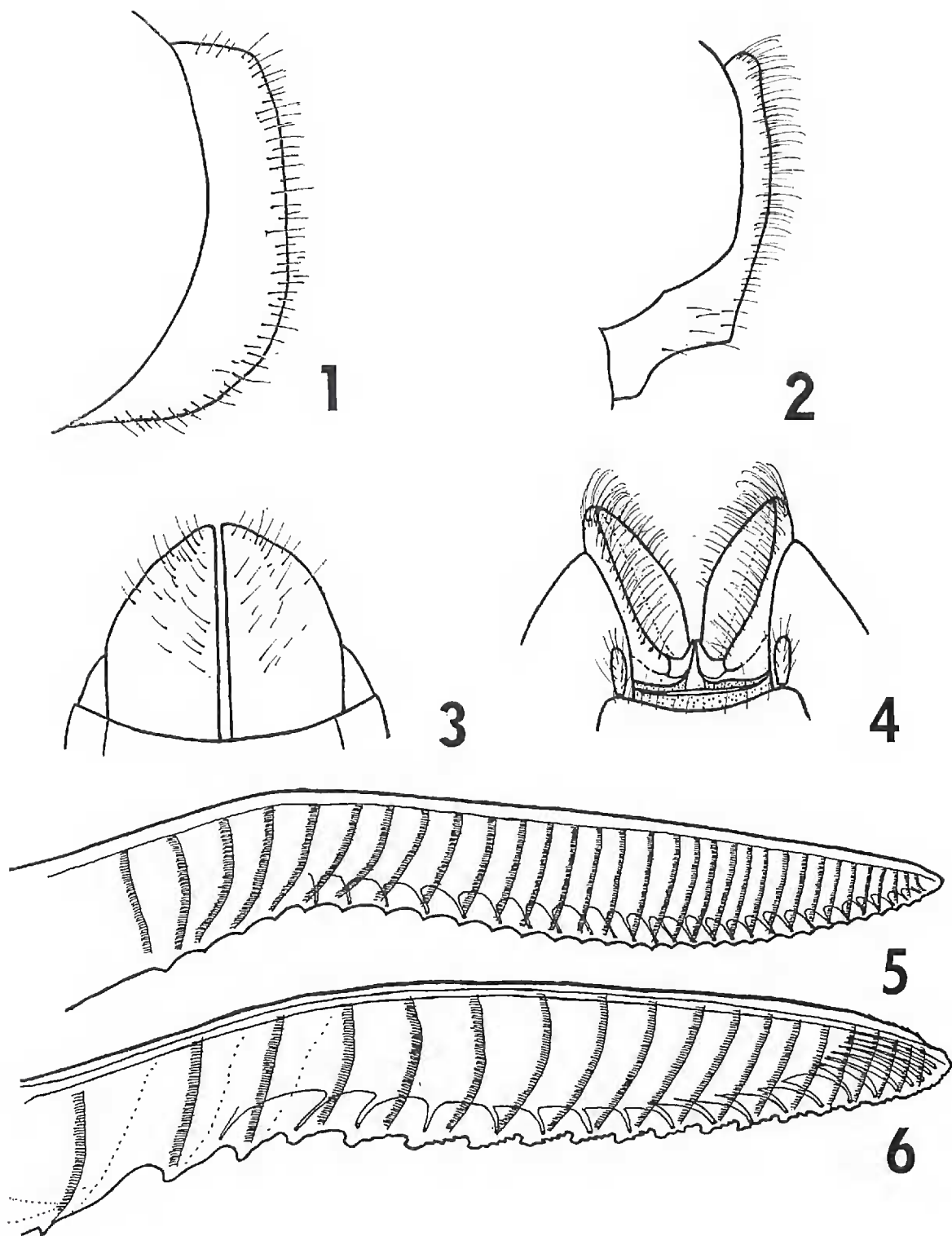


FIG. 1-4. Saw sheaths: Fig. 1. *P. patulus*, lateral view. Fig. 2. *P. apulatus*, lateral view. Fig. 3. *P. patulus*, dorsal view. Fig. 4. *P. apulatus*, dorsal view. Fig. 5-6. Left lancet: Fig. 5. *P. patulus*. Fig. 6. *P. apulatus*. (Figs. 1, 3, 5 redrawn from Smith, 1970).

dorsally. Lancet (Fig. 6) long, slender, with about 20 annuli, each annulus with short hairs and about 20 serrulae, each serrula low, pointed at apex, asymmetrical, with posterior slope 3 times longer than anterior slope and bearing 3-5 coarse posterior subbasal teeth.

Male.—Unknown.

Holotype female, MOLINO BASIN, SANTA CATALINA MTS., PIMA COUNTY,

ARIZONA, 4600 ft., 3 September 1965, L. and C. W. O'Brien. Deposited in the Florida State Collection of Arthropods, Gainesville.

Paratype female, MONTEZUMA CANYON, HUACHUCA MTS., COCHISE COUNTY, ARIZONA, 13 September 1959, L. B. Koenig, in the United States National Museum, Washington, D. C.

The broad, short, truncate sheath will separate *P. apulatus* from other *Ptenus* species. It may be separated from the closely related *P. patulus* by the all black body color, broadly rounded emarginated ventral angulation and thin scopae of the saw sheath, and lancets with about 20 annuli with asymmetrical serrulae bearing 3–5 coarse posterior subbasal teeth.

ACKNOWLEDGMENTS

I wish to thank C. W. O'Brien, (Laboratory of Aquatic Entomology, Florida A & M University, Tallahassee) and H. V. Weems, Jr. (curator, Florida State Collection of Arthropods, Gainesville) for loan of specimens. I am also grateful to D. R. Smith (Systematic Entomology Laboratory, ARS, USDA, Washington, D. C.) and E. E. Grissell (Florida State Collection of Arthropods, Gainesville) for their comments and suggestions.

LITERATURE CITED

- SMITH, D. R. 1970. Nearctic species of the genus *Ptenus* Kirby (Hymenoptera: Argidae). Trans. Amer. Entomol. Soc., 96: 79–101.